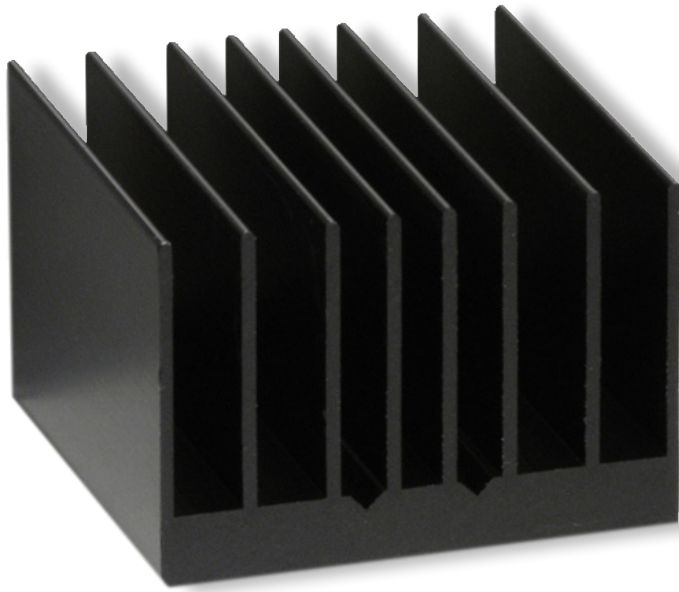




STRAIGHT FIN

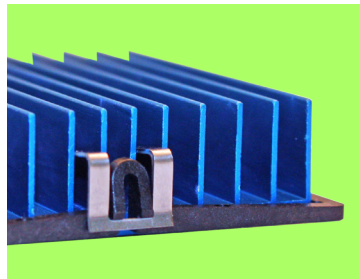


- High performance straight fin heat sinks with the best thermal performance in its class
- Designed specifically for BGAs and other surface mount packages
- Extruded aluminum minimizes thermal resistance, reduces weight and keeps costs low
- Provided with pre-assembled high-performance TIM
- Available with maxiGRIP™ or superGRIP™ clip attachments

out-performs other straight fin heat sinks by

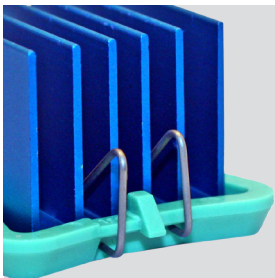
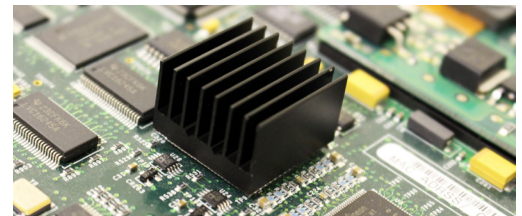
50%

when used with superGRIP™ or maxiGRIP™



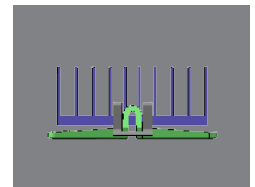
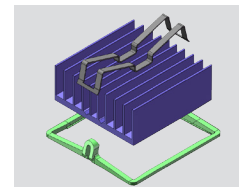
superGRIP™

15-45mm component height range



maxiGRIP™

Straight Fin Heat Sinks are available with **maxiGRIP™** and **superGRIP™** clip attachments that apply a steady, even pressure to the component and do not require holes to be drilled in the PCB.



For further technical information, call 781.769.2800, email ats-hq@qats.com or visit qats.com