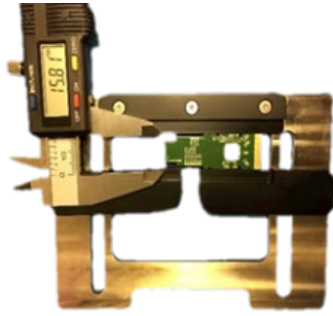


DVT-PHA01 Adjustable Test Fixture

Probes thin & flexible PCBs from 5 mm to 50 mm in size



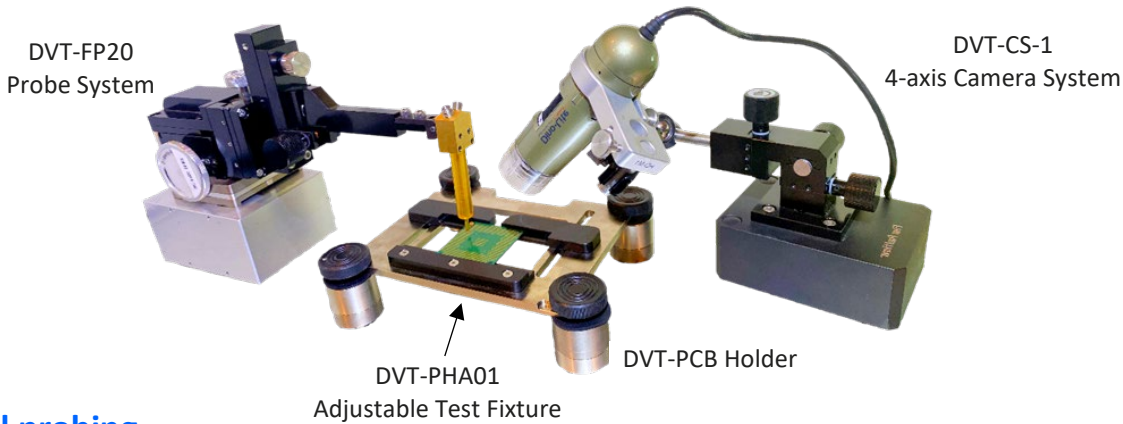
Features

- Use for horizontal or vertical testing
- Solid, rugged frame for smaller PCBs
- Easily adjustable fixture clamps
- Holds PCBs from 5 mm (.19 in) to 50 mm (1.96 in)

The DVT-PHA01 Adjustable Test Fixture can be used to test PCBs either horizontally or vertically.

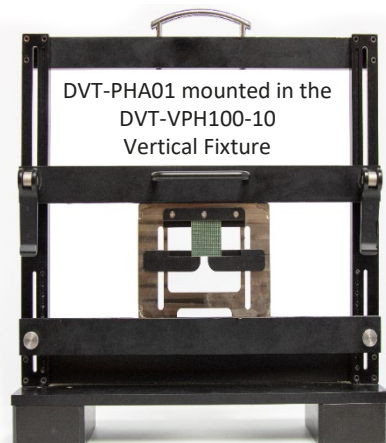
Horizontal probing

Use the DVT-PHA01 with our DVT-PCB Holders to probe PCBs in a horizontal layout. After placing the PCB in the PHA01 Adjustable Test Fixture and securing it with the easily adjustable clamps, place a DVT-PCB Holder at each corner of the test fixture. Use a DVT-FP20 Probe system to quickly position or reposition one of our probes. Use the DVT-CS-1 4-axis Camera System to ensure probe tips make simultaneous and gentle contact with the test pads.



Vertical probing

Use the DVT-PHA01 in conjunction with one of our DVT-VPH100 Vertical Test Fixtures to securely hold small PCBs in place for horizontal probing. This layout also facilitates testing both sides of the PCB.



DVT-PCB Holder



Attach PCB-Holders to the four corners of a PCB to prevent the board from moving. Remove a segment from the PCB Holder and place the stack of remaining segments underneath a thin PCB board to keep it from bowing when pressure is applied.

