

SPECIFICATIONS  
EH-TW7000

MODEL NUMBER		EH-TW7000
Projection Technology		RGB liquid crystal shutter projection system (3LCD)
Specifications of Main Parts		
LCD	Size	0.61" wide panel (C2 Fine, 10 Bit)
	Native Resolution	1080p
Lightsource	Type	250W UHE
	Life (High/Medium/Eco)	3,500 / 4,000 / 5,000 hours
Projection Lens		
Type		Optical Zoom (Manual) / Focus (Manual)
F-Number		1.49 – 1.77
Focal Length		18.2 – 29.2 mm
Zoom Ratio		1 – 1.62
Throw Ratio		1.32 – 2.15
Screen Size (Projected Distance)		Wide: 40" to 500" [1.16 to 14.87 m] Tele: 40" to 500" [1.89 to 24.01 m] Standard size: 100" screen [2.95 to 4.77 m]
Brightness <sup>1</sup>		
White Light Output (Normal / Eco)		3,000 lm / 2,000 lm
Colour Light Output		3,000 lm
Contrast Ratio		40,000:1
Geometric Correction		
Vertical / Horizontal Keystone		±30° / ±30°
Image Enhancement		
4K Enhancement		Yes (On/Off)
Picture In Picture		N/A
Aspect Mode		Yes
Frame Interpolation		Off / Low / Normal / High (2D and 3D Mode)
Image Preset Mode		Yes
MPEG Noise Reduction		Yes
Super Resolution		Yes
Detail Enhancement		Yes
3D Features		
3D Display		Yes
2D – 3D Conversion		N/A
3D Format		Side by Side / Top and Bottom
3D Depth		-10 to +10
Connectivity		
Analog Input	D-Sub 15Pin	N/A
	5BNC	N/A
Digital Input	DVI-D	N/A
	HDMI Type A	2 (HDCP 2.2)
	SDI	N/A
	HDBaseT	N/A
Output Terminal	D-Sub 15Pin	N/A
Audio Input	Stereo Mini Jack	N/A
Audio Output	Stereo Mini Jack	1
	USB Type A	2 (Port1: Wireless LAN, Firmware Update, Copy OSD Settings) (Port 2: For Streaming Media Player with 2,000 mA Power Supply)
Control I/O	USB Type Mini-B	1
	RS-232C	N/A
	Remote Control Input	NA
Network	Wired LAN	N/A
	Wireless	Optional (ELPAP10)
Wireless Specification		
Supported Connection Mode		Infrastructure, Access Point
Supported Speed For Each Mode		IEEE 802.11b (2.4GHz): 11 Mbps <sup>2</sup>
		IEEE 802.11g (2.4GHz): 54 Mbps <sup>2</sup>
		IEEE 802.11n (2.4GHz): 130.0 Mbps <sup>2</sup>
Wireless LAN Security		Quick Mode: WPA2-PSK Advanced Mode: WPA/WPA2-PSK
Operating Temperature		5 - 35 °C <41 - 95 °F> (0 - 2,286 m / 0 - 7,500 ft) 5 - 30 °C <41 - 86 °F> (Over 2,286 m / 7,500 ft) (20% - 80% Humidity, No Condensation)
Operating Altitude		0 - 3,048 m <0 - 10,000 ft>
Direct Power On / Off		Yes / N/A
Start-Up Period		Up to 19 seconds, Warm-up Period: 30 seconds
Cool Down Period		Up to 7 seconds
Power Supply Voltage		100 - 240 V AC ±10%, 50/60 Hz
Power Consumption (220 - 240V)		
Lamp (Normal / Eco)		368W / 280W
Standby (Network On / Off)		2.0W (Optional Wireless LAN) / 0.5 W
Dimension Excluding Feet (D X W X H)		310 x 410 x 157 mm
Weight (Including Standard Lens)		Approx. 6.6 kg
Fan Noise (Normal / Eco)		35dB / 24dB

<sup>1</sup> Colour brightness (colour light output) and white brightness (white light output) will vary depending on usage conditions. Colour light output measured in accordance with IDMS 15:4; white light output measured in accordance with ISO 21118.

<sup>2</sup> Maximum speed and range is achievable when used with same enhanced mode technology. Actual data rates, features and performance may vary depending on your computer system, the environment and other factors.



Supplied Accessories

- Power Cable (3 m)
- Remote control with 2AA Battery
- User's Manual CDRom
- Quick Start Guide

Optional Accessories

- Air Filter: ELPAP39
- Wireless LAN Unit: ELPAP10
- Spare Lamp: ELPLP85
- Ceiling Mount: ELPLMB22

EH-TW7000



©2019 Epson Singapore Pte Ltd. All Rights Reserved. Reproduction in part or in whole, without the written permission from Epson, is strictly prohibited.

EPSON and EXCEED YOUR VISION are registered trademarks of Seiko Epson Corporation.

All other product names and other company names used herein are for identification purposes only and are the trademarks or registered trademarks of their respective owners.

Epson disclaims any and all rights in those marks. Projected images shown herein are simulations. The actual product design and contents may vary. Specifications are subject to change without notice and may vary between countries. Please check with local Epson offices for more information.

Apple, iPad and iPhone are trademarks of Apple Inc., registered in the U.S. and other countries. App Store is a service mark of Apple Inc.

Android is a trademark of Google Inc.

Dealer's Stamp

Information correct at time of printing.  
Printed November 2019

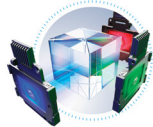
4K PRO-UHD  
HOME ENTERTAINMENT PROJECTOR  
EH-TW7000



Delivering high-end features at an affordable price, this 3,000 lumens EH-TW7000 home projector is the latest addition to your home entertainment. Turn EH-TW7000 into a smart projector by connecting your streaming devices, Blu-ray players, game consoles and more via the multiple ports available. Watch how these contents can come to life on screen with 4K PRO-UHD\* technology.



EH-TW7000



IT'S IN THE DETAILS.

3LCD technology that delivers quality projected images and reliable performance.



Sales Enquiries  
800 120 5564

EpsonSEA @EpsonSEA @EpsonSEA YouTube EpsontSoutheastAsia Epson Southeast Asia

For latest specifications, visit [www.epson.com.sg/interactive](http://www.epson.com.sg/interactive) or call +65 800 120 5564.

Epson Singapore Pte Ltd 1 Harbourfront Place, #03-02 HarbourFront Tower One, Singapore 098633. Tel: (65) 6586-5500 Fax: (65) 6271-9755  
Epson Customer Care Centre 108 Pasir Panjang Road, #04-08 Golden Agri Plaza, Singapore 118535. Epson Helpdesk: 800 120 5564. Operating hours: Monday - Friday, 9am - 6pm, Saturday, 9am - 1pm. Closed on Sunday and Public Holiday.

\* 4K PRO-UHD Technology shifts each pixel diagonally to double Full HD resolution. Resolution is Full HD in 3D mode.  
\*\* Color brightness(color light output) in brightest mode, measured by a third-party lab in accordance with IDMS 15.4. Color brightness will vary depending on usage conditions. Top-selling Epson 3LCD projectors versus top-selling 1-chip DLP® projectors based on NPD sales data for May 2017 – April 2018.





## Powerful Cinematic Experience

Level up and recreate your home entertainment experience with Epson EH-TW7000.

With the flexibility that comes with functions such as lens shift, zoom and 4K PRO-UHD<sup>1</sup> technology, you can now maximise your viewing experience.



<sup>1</sup> 4K PRO-UHD Technology shifts each pixel diagonally to double Full HD resolution. Resolution is Full HD in 3D mode.





**Crisp and clear images with 4K PRO-UHD<sup>1</sup>**

Enjoy 4K UHD content in breathtaking quality while having the option to upscale non-4K contents too.



**Fuss-free to set up**

Turn EH-TW7000 into a smart projector just by simply plugging in your streaming media players to watch your favourite contents come to life.



**Rich image quality**

Intense and vivid colours thanks to the 3,000 lumens of equal white & colour light output.



**Sharper images for motion picture**

Vivid, lively images come alive in movies, sports and gaming.



**Gaming and streaming capability**

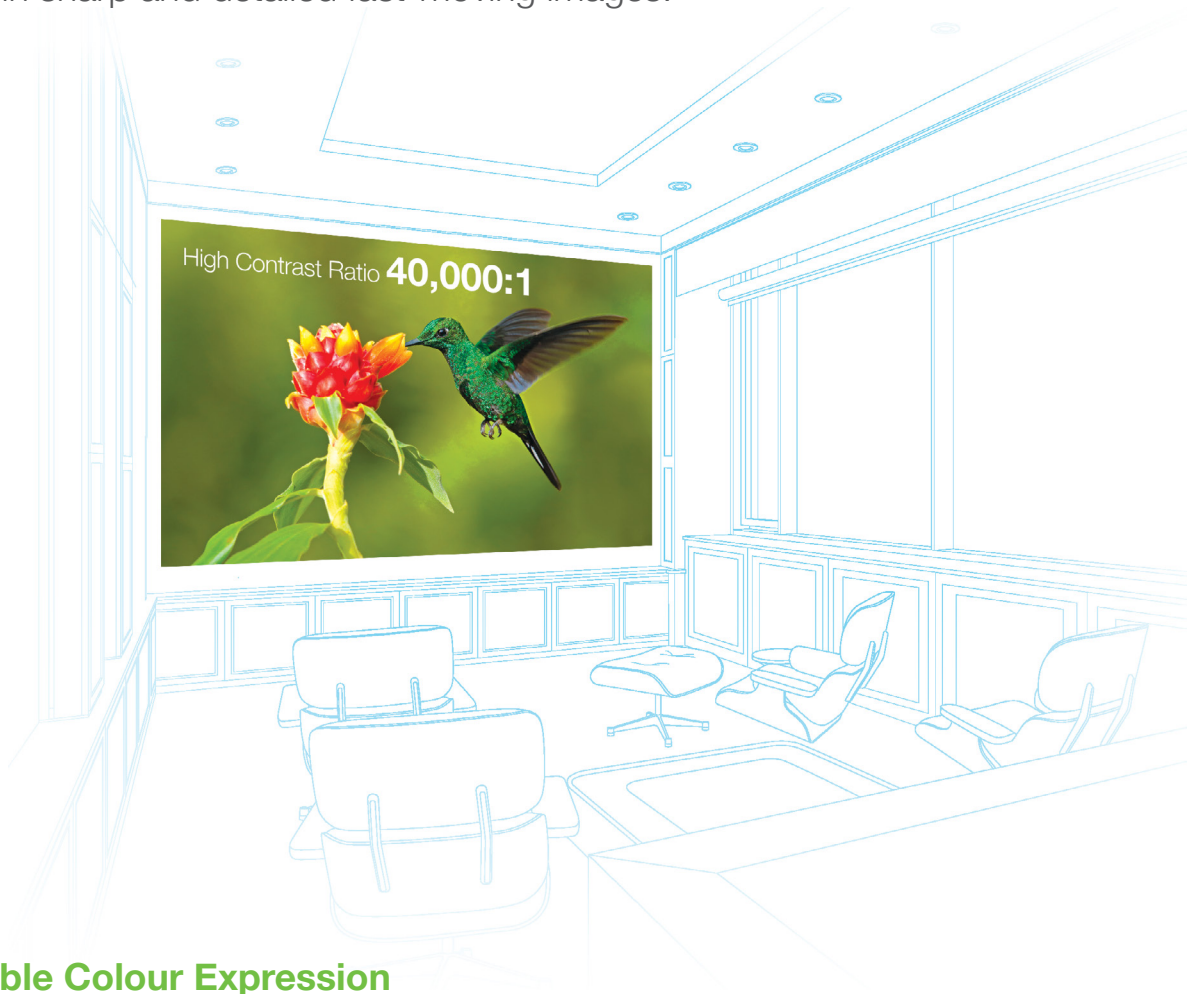
Up your gaming experience with sharper images and streaming media functions.

<sup>1</sup> 4K PRO-UHD Technology shifts each pixel diagonally to double Full HD resolution. Resolution is Full HD in 3D mode.



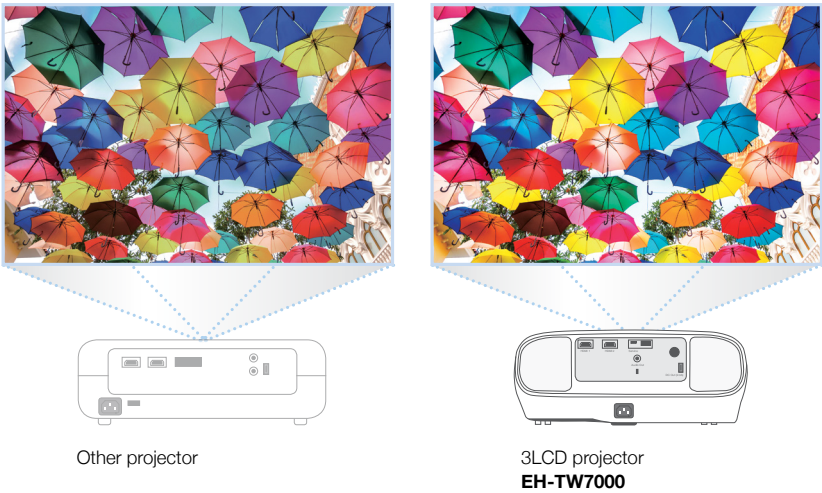
Be mesmerised with the bright and vivid colours that Epson EH-TW7000 4K PRO-UHD Home projector is able to achieve. This affordable projector delivers an equal colour and white light output of 3,000 lumens for your viewing enjoyment.

With an optimum contrast ratio of 40,000:1 along with frame interpolation, you can now revel in sharp and detailed fast-moving images.



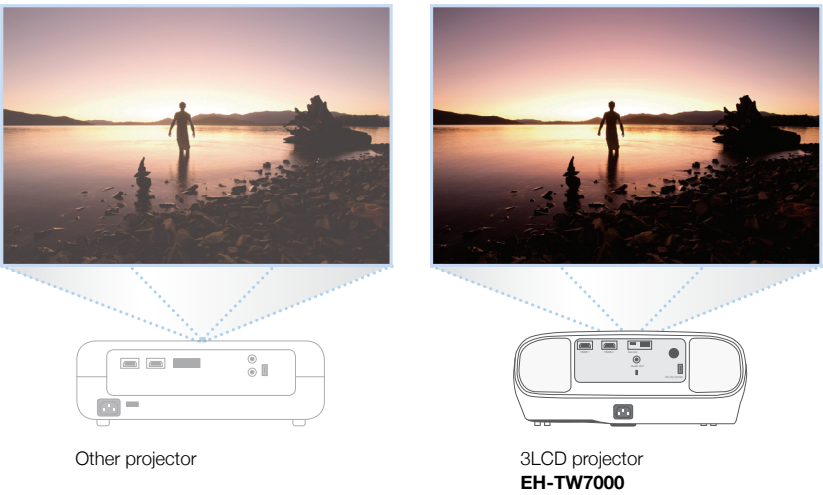
Remarkable Colour Expression

With 3LCD technology, EH-TW7000 is able to achieve a 100% balanced colour and white brightness of 3,000 lumens to deliver a vibrant and rich colour projection. By utilising advanced 12-bit digital-to-analogue conversion of 3LCD panel, Epson projectors can display smooth tonal transitions with no rainbow effects that are usually associated with many 1-chip projectors.



40,000:1 High Contrast Ratio

With an optimum brightness and dynamic contrast of 40,000:1, Epson EH-TW7000 allows users to project beautiful and well-defined images in the comfort of their own homes.

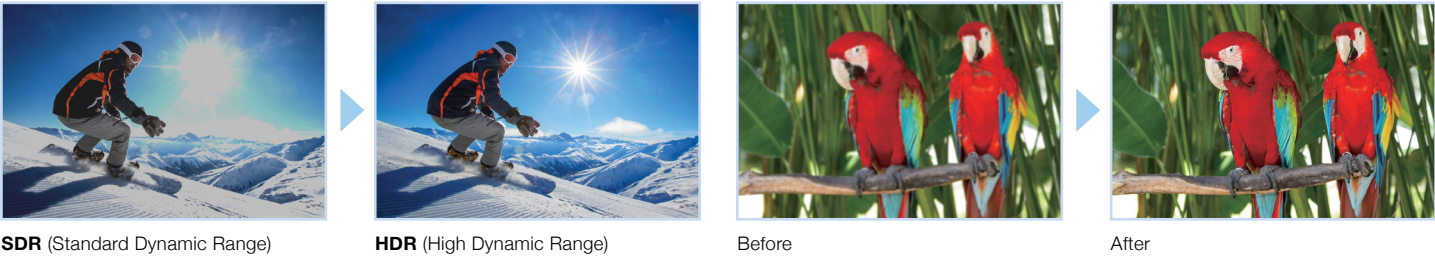


High Dynamic Range

Enjoy vibrant, brighter and sharper images with the enhanced High Dynamic Range (HDR) function. With a wider HDR10 parameter range, users can now adjust brightness and gradation of projected images with greater detail and accuracy.

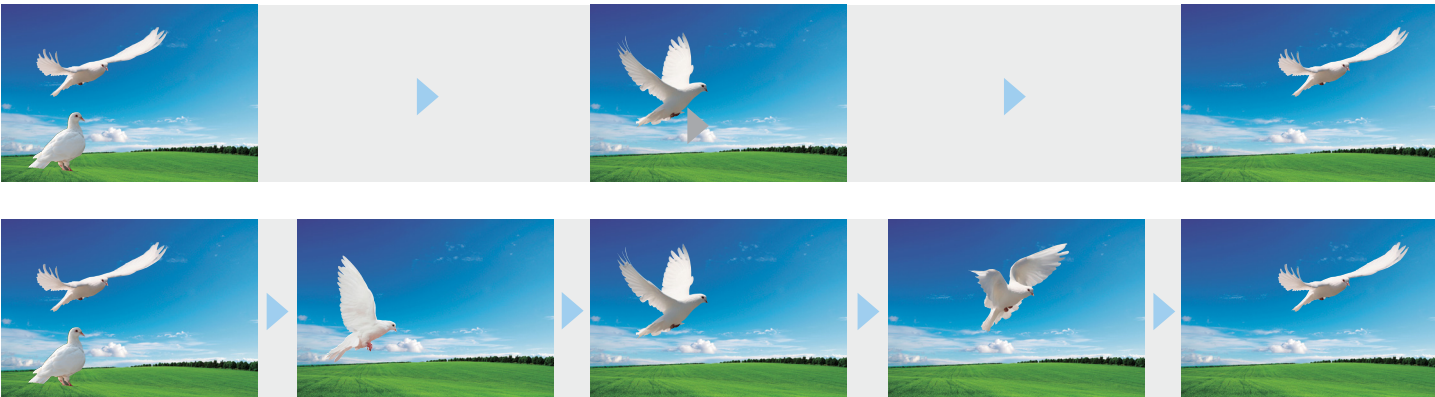
Image Enhancement

With advanced image processing, enjoy sharp and crisp images through the 5 preset modes available, easily adjusting to your preferred optimal image output.



Frame Interpolation

Enjoy vibrant, brighter and sharper images with the enhanced High Dynamic Range (HDR) function. With a wider HDR10 parameter range, users can now adjust brightness and gradation of projected images with greater detail and accuracy.



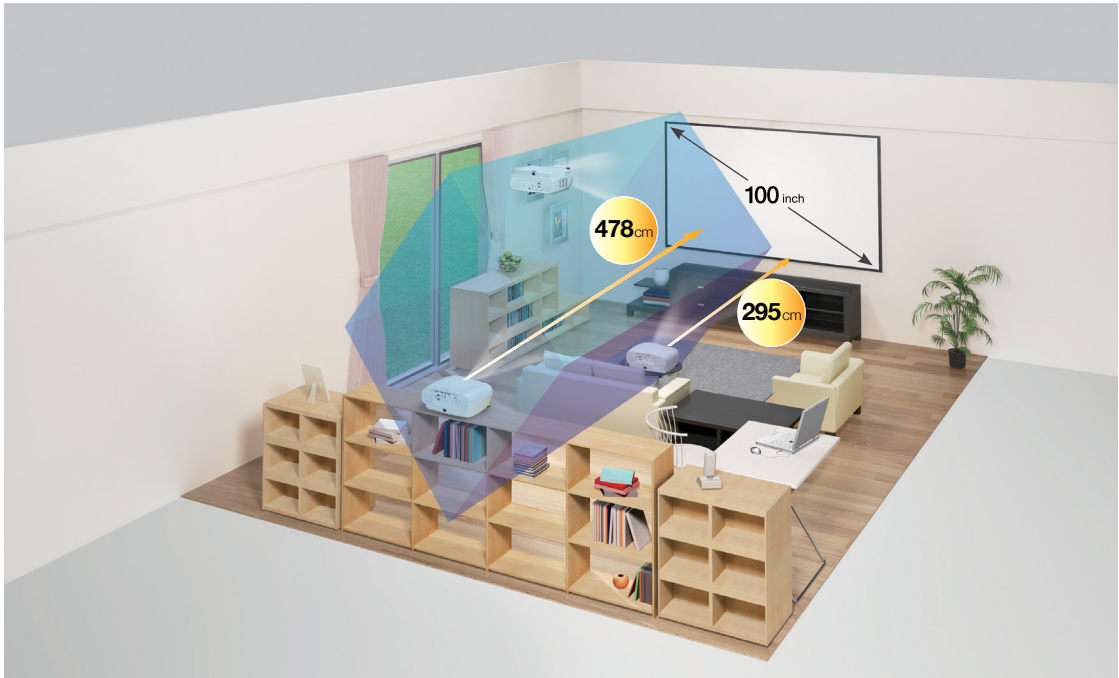
\* Simulated image of frame interpolation. Frame interpolation works 1080p only.



Flexible Installation

Lens Shift & 1.6 Zoom Lens

Wide range of placement possibility with a broad vertical shift ranging between 60% and 24% horizontally. With the in-built 1.6x zoom lens, you can place the projector from 295cm to 478cm away from the screen, to achieve a 100-inch screen size.



Compact Design for Easier Placement

EH-TW7000 is designed with its air exhaust at the front for better ventilation and convenient placement in narrow spaces.



USB Type-A Support

Equipped with 2 USB Type-A ports - one of which is used to provide power supply to the streaming media device that is connected to EH-TW7000.



Smart Connectivity Solutions

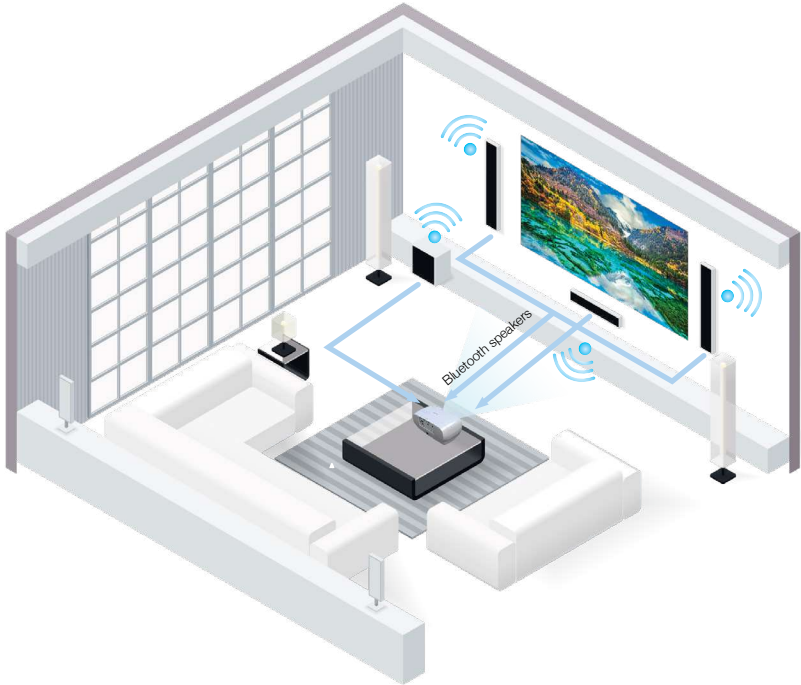
Wide-ranging Connectivity

Comes with multiple connection methods to suit a wide range of entertainment devices, making home entertainment more accessible than ever.



Bluetooth Audio

Go wire-free by connecting your Bluetooth speakers to the projector. With the Qualcomm® aptX™ audio you can now enjoy the music without compromising on sound quality.\*



\* Connection compatibility may vary depending on the speakers or environment. Qualcomm® aptX™ is a product of Qualcomm Technologies, Inc. and/or its subsidiaries. Qualcomm is a trademark of Qualcomm Incorporated, registered in the United States and other countries. aptX is a trademark of Qualcomm Technologies International Ltd., registered in the United States and other countries.



# Fuss-free Application

## Home Button

Direct access to the menu via the Home Button for various settings such as Colour Mode and 3D capabilities for an easy set-up



## iProjection App\*

Use your smart device as a remote control through the “iProjection” app, which comes with touch control operation for easier navigation of menus. Such as changing of picture quality “Presets” to suit a variety of room environments via your smart device.

Using the iProjection App is easy:



- 1

**Connect**  
Connect your PC/mobile device to the projector's wireless network.
- 2

**Launch**  
Launch the app and select the connected projector.
- 3

**Project**  
Select the content that you want to project and you're ready to go!

\* iProjection only works when used together with optional wireless ELPAP10.  
\* In iProjection mode, projector profile search, multi-screen display, distribution function, audio transfer, movie file transfer, and encryption data transfer capabilities are not supported.

EPSON

EXCEED YOUR VISION

PROJECTOR WISHES COME TRUE.

EPSON 3LCD PROJECTORS

1-CHIP PROJECTORS



Up to **3x** Brighter Colours with Epson Projectors<sup>1</sup>

**TRUE BRIGHTNESS**

 WHITE 3000 LUMENS

 COLOUR 3000 LUMENS



**TRUE COMFORT**

 LIGHT SOURCE

 ROTATING COLOUR WHEEL



**NO RAINBOW EFFECT**

**TRUE REALISM**

 WIDER COLOUR RANGE



**3x WIDER COLOUR GAMUT** Epson Projectors

**TRUE REALISM**

 SMALLER COLOUR RANGE



Brighter, vivid projection from Epson.

9 out of 10 PEOPLE PREFER IMAGES FROM EPSON PROJECTORS





3LCD

 EpsonSEA

 @EpsonSEA

 @EpsonSEA

 EpsonSoutheastAsia

 Epson Southeast Asia

Find out more at [www.epson.com.sg/truecolours](http://www.epson.com.sg/truecolours)



IT'S IN THE DETAILS.

With 3LCD panels, every projection gives you spectacular true colours.

<sup>1</sup> Leading Epson business and education projectors vs. leading 1-chip DLP® projectors, selected according to NPD data as of July 2015. Based on U.S. research conducted by Radius Research.  
<sup>2</sup> These lumen statistic can be found at [www.colorlightoutput.com](http://www.colorlightoutput.com).  
<sup>3</sup> Color brightness(color light output) in brightest mode, measured by a third-party lab in accordance with IDMS 15.4. Color brightness will vary depending on usage conditions. Top-selling Epson 3LCD projectors versus top-selling 1-chip DLP® projectors based on NPD sales data for May 2017 – April 2018.  
<sup>4</sup> Gamut volume in brightest mode, measured by a third-party lab in 3D in the CIE L\*a\*b\* coordinate space. Top-selling Epson 3LCD projectors versus top-selling 1-chip DLP® projectors based on NPD sales data for May 2017 – April 2018.