



## Professional Label Printer series

- Print in Black and Red to highlight important information
- Wide range of connectivity options
- PC, Mac OS® systems, iOS and Android compatibility
- Standalone print with no PC required for QL-820NWB for Food and Retail industries





## Versatile labelling options

Equipped with fast print speed and with the most connectivity options, QL-800 label printers series are the ideal solution for many business applications.

### Print Black and Red\* text without ink

Draw attention to important information by including red and black information on labels. Ideal for highlighting use-by dates, allergens and any other critical information.



### Wide range of connectivity options

All models allow easy connection to computers using USB. QL-810W incorporates with Wi-Fi. While the flagship QL-820NWB has additional Wired network and Bluetooth connectivity.

### Create labels in various sizes

Labels are available in a variety of Die-cut (pre-cut sizes) or Continuous length rolls that allow the built-in cutter to trim the label to the precise length and up to one metre.



### Print from Desktop, Mobile devices or Standalone

All models are PC or Mac OS® systems compatible. QL-810W and QL-820NWB can connect to smartphones and tablets using built-in wireless connections. Select and print labels stored in the memory of QL-820NWB using the large LCD display and integrated control panel.

\* Requires DK-22251 62mm x 15.24m Red/Black on White Continuous Length Paper tape to print in Black and Red.

QL-800 label printers series offer unrivalled versatility not only for office but also for retail, food, postal services, facilities management and other industries.

Create labels with black and red\* print and up to 1 metre in length, from PC, Mac OS® systems, iOS\*\* or Android\*\* devices. Several wired and wireless connectivity options are available. There is an ability to print labels stored in the printer's memory using the integrated LCD control panel on QL-820NWB or external devices connected to the printer.

For developers and systems integrators who are looking to incorporate their label printing as a part of their solutions, Software development kits (SDK) for Windows, iOS and Android are available that provide an interface to QL-800 label printers series.



## Features



**QL-800**



**QL-810W**



**QL-820NWB**

|   | QL-800 | QL-810W | QL-820NWB |
|---|--------|---------|-----------|
| Fast print speed – number of labels per minute  | 93     | 110     | 110       |
| Print labels with both Black and Red* print   | •      | •       | •         |
| Label design software for PC or Mac OS® system (P-touch Editor)   | •      | •       | •         |
| Built-in label design software for PC or Mac OS® systems with no software or driver installation required (P-touch Editor Lite) | •      | •       |           |
| USB   | •      | •       | •         |
| Wi-Fi with AirPrint   |        | •       | •         |
| Wired Ethernet  |        |         | •         |
| Bluetooth for easy connection to iOS or Android devices   |        |         | •         |
| Standalone print of labels stored in printer memory   |        |         | •         |
| Optional Rechargeable Li-ion battery without power sources required   |        | •       | •         |
| Software Development Kits (SDK) for Microsoft Windows***, iOS and Android devices to add label printing to customised solutions | •      | •       | •         |

\* Requires DK-22251 62mm x 15.24m Red/Black on White Continuous Length Paper tape.

\*\* Red print capability from iPrint&Label app is available.

\*\*\* QL-800 supports only Microsoft Windows SDK.

# Advanced functionality

QL-820NWB with its standalone print function and remote FTP template update allows label printing directly from the control panel. This advanced connectivity options offer the widest compatibility for all devices.

## Standalone label printing

QL-820NWB has a large memory space to store label templates designed in P-touch Editor. Label templates can be uploaded into the printer's memory and accessed using the integrated control panel and backlit graphical LCD display. Ideal for printing current or future date and time on labels use in Food and Retail industries.



## Remote template update via FTP

Where QL-820NWB is deployed at multiple locations, updating the templates in all printers will be operation intensive. The printer can automatically connect to the FTP remote server. if there is any new templates, remote update will be performed automatically. This will helps the organisation save time and money, while ensuring consistent operation at remote locations. This remote update can be done directly to the printer via internet, without the need of a computer connection.

## AirPrint\* and Bluetooth with MFi (iPod, iPhone, iPad) Compatibility

QL-810W and QL-820NWB support Apple AirPrint\* with compatible apps on iOS devices and Mac devices. QL-820NWB offers Bluetooth connectivity that can connect to iOS and Android devices easily.



\* iOS and Mac OS® systems can only supports Black print only when using the default AirPrint function. Red print capability is available from iOS devices using AirPrint with the apps developed using Brother Software Development Kit (SDK).

# Software solutions

With label design apps for computer, mobile devices and SDK to integrate with QL label printers series into end-users applications, select the best option to print.



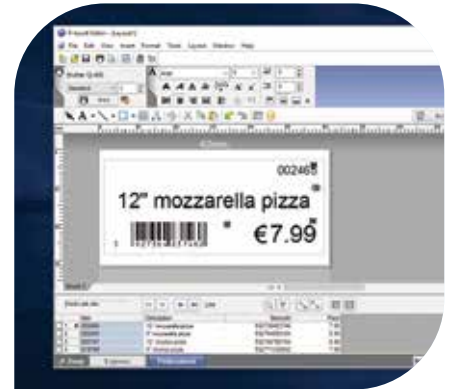
## P-touch Editor Lite\* / P-touch Editor Lite LAN\*

In-built inside QL-800 and QL-810W, this easy-to-use label design software works without the need to install software or drivers. Work like a USB flash drive, simply connect to PC or Mac OS® systems using USB and launch the software from the drive. Include images, frames and any fonts in the label design to print.

Network version is also available. Simply run the software to allow any computer in the office to print labels to one printer with no printer driver and software installation required.

## P-touch Editor with Microsoft Office Plugin

Design professional labels which include images and logos, barcodes and frames. Link to database files such as Excel or .csv files etc and print as many labels quickly and efficiently. Microsoft Office plugin allows highlighting, clicking and printing from Word, Excel or Outlook.



## Brother iPrint & Label app\*\* for iOS, Android smartphones and tablets

Print labels on QL-810W and QL-820NWB via the free Brother iPrint&Label app. Connect via Wi-Fi or Bluetooth (for QL-820NWB) and choose one of the pre-defined templates or quickly design label from scratch. This app is available from mobile device's app store by searching for "Brother iPrint&Label".

## Software Development Kits (SDK) for Windows, iOS and Android

System integrators and software developers can use the various Brother SDK's that allow easy integration of label printing directly to their own apps and software. For more information please visit

<https://www.brother.co.jp/eng/dev/index.aspx>



\* Black print capability only. Uses P-touch Editor for Black and Red printing

\*\* Red print capability from iPrint&Label app is available.

# Logistics and Warehousing

In busy warehouses and post rooms, accurate and timely labelling of parcels, envelopes and product cartons is essential to ensure the smooth running of all logistics operations. Using red\* print on labels ensure crucial information is noticed with barcodes that can be quickly generated as-and-when required.

\* Requires DK-22251 62mm x 15.24m Red/Black on White Continuous Paper tape



Handling labels



Temporary signage



Shipping labels

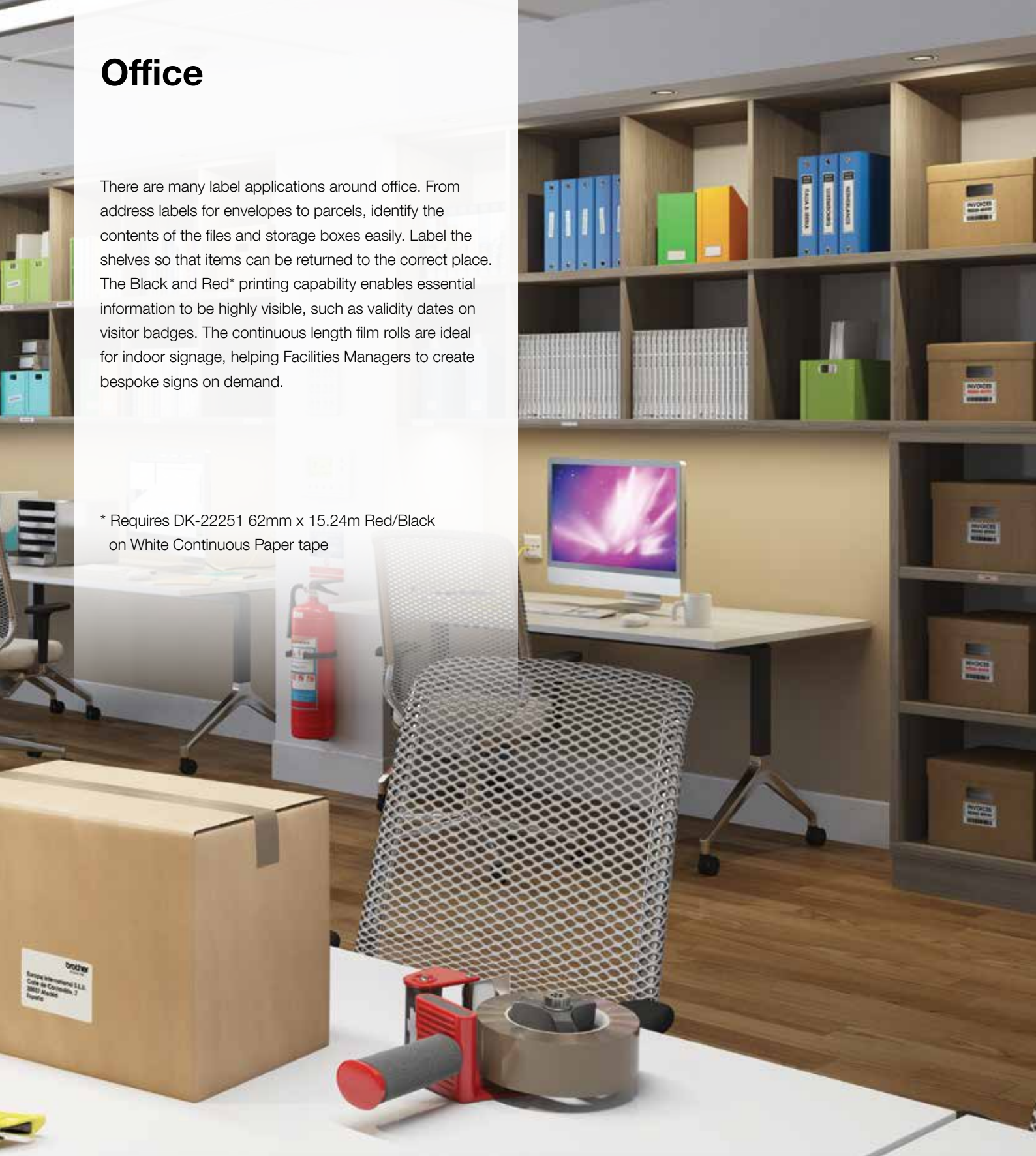


Product packaging

# Office

There are many label applications around office. From address labels for envelopes to parcels, identify the contents of the files and storage boxes easily. Label the shelves so that items can be returned to the correct place. The Black and Red\* printing capability enables essential information to be highly visible, such as validity dates on visitor badges. The continuous length film rolls are ideal for indoor signage, helping Facilities Managers to create bespoke signs on demand.

\* Requires DK-22251 62mm x 15.24m Red/Black on White Continuous Paper tape



Visitor badges



Postage labels



Document filing



Indoor signage



# DK rolls for QL-800 label printer series

Wide range of labels are available in paper and film material, die-cut labels or continuous length labels rolls.

| DK Die-Cut Labels                 | Material | Colour | Size        | Item No. |
|-----------------------------------|----------|--------|-------------|----------|
| Standard address label (400/roll) | Paper    | White  | 29 x 90 mm  | DK-11201 |
| Large address label (400/roll)    | Paper    | White  | 38 x 90 mm  | DK-11208 |
| Small address label (800 roll)    | Paper    | White  | 29 x 62 mm  | DK-11209 |
| Shipping label (300/roll)         | Paper    | White  | 62 x 100 mm | DK-11202 |
| File folder label (300/roll)      | Paper    | White  | 17 x 87 mm  | DK-11203 |
| Multi-purpose label (400/roll)    | Paper    | White  | 17 x 54 mm  | DK-11204 |
| Square label (1000/roll)          | Paper    | White  | 23 x 23 mm  | DK-11221 |
| CD/DVD label (100/roll)           | Film     | White  | 58 mm       | DK-11207 |
| Round label (1200/roll)           | Paper    | White  | 12 mm       | DK-11219 |
| Round label (1000/roll)           | Paper    | White  | 24 mm       | DK-11218 |

| DK Continuous-Length Tapes - 30.48m | Material            | Colour | Size  | Item No.  |
|-------------------------------------|---------------------|--------|-------|-----------|
| Continuous-length                   | Paper               | White  | 12 mm | DK-22214  |
| Continuous-length                   | Paper               | White  | 29 mm | DK-22210  |
| Continuous-length                   | Paper               | White  | 38 mm | DK-22225  |
| Continuous-length                   | Paper               | White  | 50 mm | DK-22223  |
| Continuous-length                   | Paper, non-adhesive | White  | 54 mm | DK-N55224 |
| Continuous-length                   | Paper               | White  | 62 mm | DK-22205  |
| Continuous-length                   | Paper, removable    | White  | 62 mm | DK-44205  |
| Continuous-length                   | Paper, removable    | Yellow | 62 mm | DK-44605  |

| DK Continuous-Length Tapes - 15.24m | Material | Colour | Size  | Item No. |
|-------------------------------------|----------|--------|-------|----------|
| Continuous-length                   | Film     | White  | 29 mm | DK-22211 |
| Continuous-length                   | Film     | White  | 62 mm | DK-22212 |
| Continuous-length                   | Film     | Yellow | 62 mm | DK-22606 |
| Continuous-length                   | Film     | Clear  | 62 mm | DK-22113 |
| Continuous-length - Black/Red print | Paper    | White  | 62 mm | DK-22251 |

## Accessories

### PA-BU-001 Rechargeable Li-ion battery (sold separately)

PA-BU-001 Rechargeable Li-ion battery can be mounted onto the base of QL-810W and QL-820NWB to perform label printing standalone without any power sources. It is an ideal solution for mounting in trollies or pushcarts for exhibition badges printing. With a fast-charge of under 2 hours 30 minutes, the battery can last up to 4300 labels (Monochrome) or 1400 labels (Colour) prints per charge\*.



\* Continuous label printing using USB when fully charged.



# Retail

Conveying product pricing and any special offers to the shoppers quickly is crucial in the retail industry. Print pricing labels for product tags can include barcodes. Use red\* print to highlight special offers or promotions by creating eye-catching indoor signage.

\* Requires DK-22251 62mm x 15.24m Red/Black on White Continuous Paper tape



Pricing and Barcode labels



Promotion signage

# Food

On-demand label printing is a critical part of the food industry, such as highlighting allergen information to consumers, show use-by/best before dates and product pricing including EAN-8 / EAN-13 barcodes.

QL-820NWB Standalone label printing function is ideal for counter-top use and printing labels on-demand.

Takeaway outlets can print details of the orders, including address information where delivery is required.



Takeaway orders



Shelf-edge labelling

# Specification

## QL-800

## QL-810W

## QL-820NWB

### Package content

|                   |   |  |
|-------------------|---|--|
| <b>In the box</b> | <p>QL-800<br/>DK-11201 29mm x 90mm x 100pc<br/>Standard Address Label, Die-cut<br/>Paper<br/>DK-22251 62mm x 5m Red/Black on<br/>White Continuous Length Paper tape<br/>USB cable<br/>AC Power adapter<br/>User guide</p> | <p>Label Printer<br/>DK-11201 29mm x 90mm x 100pc Standard Address Label, Die-cut Paper<br/>DK-22251 62mm x 5m Red/Black on White Continuous Length Paper tape<br/>USB cable<br/>AC Power adapter<br/>User guide</p> |
|-------------------|---|--|

### Software / Firmware

|  |  |  |   |
|--|--|--|---|
| <b>Operating systems support</b><br>(visit <a href="https://support.brother.com">https://support.brother.com</a><br>for the latest download and support) | <p>Microsoft® Windows Vista®<br/>/ Windows® 7 / Windows® 8<br/>Windows® 8.1 / Windows® 10<br/>Mac OS X v 10.10 / 10.11 / 10.12<br/>Android 4.1 or higher</p>   | <p>Microsoft® Windows Vista®/ Windows® 7 / Windows® 8 Windows® 8.1 /<br/>Windows® 10<br/>Windows Server® 2008 / 2008 R2 / Windows® Server 2012 / 2012 R2<br/>Mac OS X v 10.10 / 10.11 / 10.12<br/>Android 4.1 or higher (SDK)<br/>iOS 6, 7, 8, 9, 10 or higher (SDK only)<br/>iOS 8, 9, 10 or higher (iPrint &amp; Label)</p>  |   |
| <b>SDK availability</b><br><a href="https://www.brother.co.jp/eng/dev/index.aspx">https://www.brother.co.jp/eng/dev/index.aspx</a>                       | b-PAC (for Windows)  | <p>b-PAC (for Windows)<br/>Brother Print SDK for Android™<br/>Brother Print SDK for iPhone/iPad (for iOS)</p>  |   |
| <b>Supported printer command</b>   | Raster   | <p>Raster<br/>ESC/P<br/>P-touch Template</p>   | <p>ZPLII emulation (upon request)<br/>ESC/P<br/>P-touch Template<br/>Raster</p> |
| <b>Barcode symbologies</b><br>(using P-touch Editor)   | <p>CODE39, CODE128, UCC/EAN128(GS1-128), ITF(I-2/5), CODABAR(NW-7), UPC-A, UPC-E, EAN13, EAN8, ISBN-2(EAN13 AddOn2), ISBN-5(EAN13 AddOn5), Laser Barcode, POSTNET, RSS(RSS14 Standard, RSS14 Truncated, RSS14 Stacked, RSS14 Stacked Omni, RSS Limited, RSS Expanded, RSS Expanded Stacked), PDF417(Standard, Truncate, Micro), QR code(Model1, Model2, Micro), Data Matrix(ECC Square, ECC Rectangular), MaxiCode(Model2, Model3, Model4, Model5)<br/>RSS symbols / CODE93 / POSTNET / UPC/EAN EXTENSION / MSI / QR Code (model 1, model 2, micro QR)PDF417 (Standard, Truncate, Micro)PDF417 / Data Matrix(ECC200 Square, ECC200 Rectangular) / MaxiCode / Aztec</p> |  |   |
| <b>Barcode symbologies</b><br>(Built-in printer firmware)  | -  | <p>CODE39, CODE128, UCC/EAN-128(GS1-128), ITF(I-2/5), CODABAR(NW-7), UPC-A, UPC-E, EAN13(JAN13), EAN8, GS1 DataBar(RSS)(GS1 DataBar Omnidirectional, GS1 DataBar Truncated, GS1 DataBar Stacked, GS1 DataBar Stacked Omnidirectional, GS1 DataBar Limited, GS1 DataBar Expanded, GS1 DataBar Expanded Stacked), PDF417(Standard, Truncate, Micro), QR Code(Model 1, Model 2, Micro), Data Matrix (ECC200 Square, ECC200 Rectangular), MaxiCode, CODE93, POSTNET, UPC-E EXTENTION</p> |   |
| <b>Internal font</b>   | -  | <p>Bitmap fonts: Letter Gothic Bold, Helsinki, Brussels, San Diego, Brougham<br/>Font sizes: 24, 32, 49 dots<br/>Outline fonts: Letter Gothic Bold, Helsinki, Brussels<br/>Font sizes: 33 - 400 dots (22 sizes)</p>  |   |

### System Requirement - PC or Mac OS® Systems

|                                 |   |
|---------------------------------|---|
| <b>Operating Systems</b>        | <p>Windows Vista® / Windows® 7 - 8 - 8.1 - 10<br/>Mac OS X v10.9.x - 10.10.x - 10.11.x - 10.12.x<br/>Windows Server® 2008 / 2008 R2 / Windows® Server 2012 / 2012 R2</p>  |
| <b>Interface</b>                | <p>Windows®: USB Port (USB Spec. 1.1, 2.0, or 3.0 protocol)<br/>IEEE802.11b/g/n Wireless LAN - 10/100 BASE-TX Wired LAN - Bluetooth 2.1 + EDR<br/>Mac: USB Port (USB Spec. 1.1 or 2.0 protocol)<br/>IEEE802.11b/g/n Wireless LAN - 10/100 BASE-TX Wired LAN - Bluetooth 2.1 + EDR - MFi</p> |
| <b>Hard Disk Requirement</b>    | Windows®: 600MB or more ; Mac: 500MB or more  |
| <b>Microsoft Office Support</b> | Microsoft® Word / Excel / Outlook: 2007 - 2010 - 2013 - 2016  |

# Specification

## QL-800

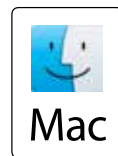
## QL-810W

## QL-820NWB

| Printing / Media                            |   |   |  |
|---|---|---|--|
| Printing technology                         | Direct thermal with 2 colour print capability                 |   |  |
| Print resolution                            | 300 x 300dpi (Standard) / 300 x 600dpi (High resolution mode) |   |  |
| Print speed (single colour)                 | Maximum 148mm per second,<br>93 labels per minute             | Maximum 176mm per second, 110 labels per minute   |  |
| Print speed (two colour)                    | 24mm per second, 15 labels per minute                         |   |  |
| Label width                                 | 12mm - 62mm   |   |  |
| Maximum print width                         | 58mm  |   |  |
| Maximum print length                        | 1 metre   |   |  |
| Media sensor type                           | Reflective  |   |  |
| Cutter                                      | Yes, (full cut / guillotine type)                             |   |  |
| Media types                                 | DK Rolls (DK Die-cut labels / DK Continuous Length tape)      |   |  |
| LCD   |   |   |  |
| Type  | -   | -   | 320 x 120 dot Graphic LCD with backlight   |
| Connectivity                                |   |   |  |
| USB   | USB version 2.0 full-speed                                    |   |  |
| USB host capability                         | -   | -   | Yes (HID class)  |
| Bluetooth                                   | -   |   | Bluetooth 2.1+EDR  |
| Bluetooth profiles                          | -   |   | SPP (Serial Port Profile)<br>OPP (Object Push Profile)<br>BIP (Basic Imaging Profile)<br>HCRP (Hard Copy Cable Replacement Profile)<br>iAP profile |
| iOS and Android compatibility               | -   | Yes, (Wi-Fi)  | Yes, (Wi-Fi / Wired LAN / Bluetooth)   |
| Wireless LAN                                | -   | IEEE802.11b/g/n   |  |
| Wireless LAN security (Infrastructure mode) | -   | WEP, WPA-PSK/WPA2-PSK (TKIP/AES),<br>LEAP (CKIP), EAP-FAST (TKIP/AES),<br>PEAP (TKIP/AES), EAP-TTLS (TKIP/AES),<br>EAP-TLS (TKIP/AES) |  |
| AirPrint                                    | -   | Yes   |  |
| Wired LAN                                   | -   | -   | 10/100 Base-TX   |
| Memory                                      |   |   |  |
| Flash (for label templates)                 | -   | 6MB   |  |
| Locations (for label templates)             | -   | 99  | 255  |
| Power                                       |   |   |  |
| Power                                       | 220 - 240V AC internal power supply                           | 100 - 240V AC External Power adapter (Auto switching)   |  |
| Battery (not included)                      | -   | PA-BU-001 Rechargeable Li-ion battery   |  |
| Battery print yield                         | -   | 4300 labels (Monochrome) / 1400 labels (2 Colours)  |  |
| Battery charging time                       | -   | Less than 2 hours 30 minutes  |  |
| Weight / Dimension                          |   |   |  |
| Dimension                                   | 125mm (W) x 213 (H) x 142mm (D)                               | 125mm (W) x 234mm (H) x 145mm (D)   |  |
| Weight                                      | 1.15kg  | 1.12kg  | 1.16kg   |

# brother

at your side



"Made for iPod," "Made for iPhone," and "Made for iPad" mean that an electronic accessory has been designed to connect specifically to iPod, iPhone, or iPad respectively and has been certified by the developer to meet Apple performance standards. Apple is not responsible for the operation of this device or its compliance with safety and regulatory standards. Please note that the use of this accessory with iPod, iPhone, or iPad may affect wireless performance.

iPad, iPhone and iPod are trademarks of Apple Inc., registered in the U.S. and other countries.

The Bluetooth word mark and logos are owned by the Bluetooth SIG, Inc. and any use of such marks by Brother Industries, Ltd. is used under license.

All specifications are correct at time of printing. Brother is a registered trademark of Brother Industries Ltd. Brand product names are registered trademarks or trademarks of their respective companies.