

TD-4D series

brother
at your side

Professional 4 inch Desktop Label Printers series



Brother TD-4D label printers series can print high quality labels on demand. Print labels up to 4 inches in width and with direct thermal print technology, they are suitable for a wide range of vertical industry applications.



TD-4D Professional Desktop Label Printers series



Seamless integration

TD-4D label printers series provide an easy-to-use solution with improved operational efficiency due to its high speed and continuous label printing. With seamless integration and modular design, print virtually from anywhere in the workplace. Support a wide variety of printer command languages such as ZPL II emulation, integrate these print commands into any end-users customised application easily.



Professional Label printing



**BLOOD SAMPLE
BOTTLES**

Labels are often required as important information. TD-4D label printers series can put it all together with efficiency, consistency and produce high quality results.

TD-4D label printers series offer direct thermal, high speed and high resolution printing up to 300dpi print resolution. Optional accessories such as label peeler or automatic cutter are available, for producing continuous length labels and print on demand.

The software supports barcode printing, embellish font programming for highlighting specific words, importing of graphics and date format for a truly personalised solution.



Printing Technology

Direct Thermal

Low-cost, high-volume labels can be created through this process, which uses a heat-sensitive coating and thermal print head. Traditional printing ribbons and ink are not required. Ideal for shorter term and less permanent labelling uses.

Healthcare, Medical and Laboratory



With strict regulations on tracking of patient specimens and other items within the healthcare industry, clear and high quality labels are essential to maintain safety and traceability.

Applications include:

- Appointment cards
- Admission labels
- Specimen and pathology labels
- Blood bag labels
- Laboratory labels
- Microbiology labels
- Dosage or drug bag labels



Warehousing and Logistics



Efficient warehousing operation and worker productivity are critical to the success of many companies. With the most common sizes of shipping labels available and the ability to create custom size labels, there are many uses for these printers in the warehouse.

Applications include:

- Shipping labels
- Carton labels
- Location labels
- Pallet identification labels
- Quality control labels
- Compliance labels



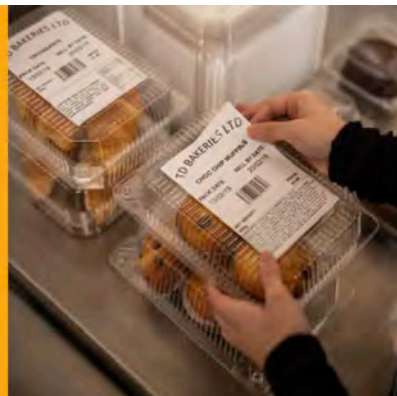
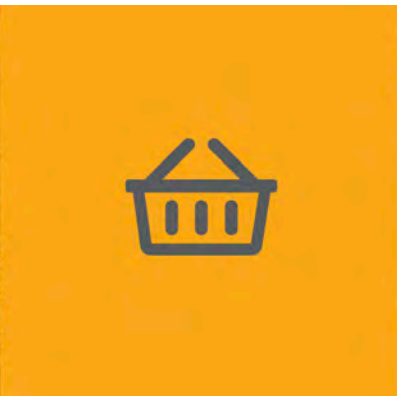
Retail



Easy to read labels are essential for consumers to make informed decisions prior to a purchase. With high print resolution and high quality labels print out, every label will look professional with sharp text, logos or barcodes that allow faultless scanning at retail checkout.

Applications include:

- Pricing labels
- Barcode labels
- Pre-packaged food ingredients labels
- Nutrition information labels
- Shelf-edge labels
- Sales, Mark-down, Discount pricing labels



Accessories

Brother has a wide range of accessories to help customise solution to meet any labelling requirements. Brother accessories help the end-users to equip their device to cope with specific requirements.

Accessories

PA-LP-002

Label Peeler

TD-4410D
TD-4420DN
TD-4520DN
TD-4550DNWB



PA-CU-001

Cutter

TD-4410D
TD-4420DN
TD-4520DN
TD-4550DNWB



PA-HU2-001

Thermal Print Head (203dpi)

TD-4410D
TD-4420DN



PA-HU3-001

Thermal Print Head (300dpi)

TD-4520DN
TD-4550DNWB



PA-PR2-001

Platen Roller (203dpi)

TD-4410D
TD-4420DN



PA-PR3-001

Platen Roller (300dpi)

TD-4520DN
TD-4550DNWB



With label design apps for desktop PC, mobile devices and SDK to integrate with TD-4D label printers series into end-users applications, select the best option to suit the end-users label printing needs.

Brother provides all the necessary tools required for software developers to integrate printing into their applications. Printer drivers are available for Windows OS, and Software Development Kits (SDK) to support Windows Mobile*, Android and iOS operating systems.

Software Support Features

P-touch Editor

P-touch Editor can create customised labels with pixel precision. With features that support for over 15 barcode protocols, advanced image dithering to print high quality grayscale images and the ability to link to database in Excel spreadsheets for batch printing of labels, any label design and creation is possible.

Crop Function

Built into the Windows driver, this function helps to take away the inconvenience of using A4 sheets of labels in a standard printer. This clever feature will automatically scans the document and extracts the shipping or product label barcode one at-a-time and print out individually.

Template Mode

Design document in Windows PC, including logos and barcodes. Once transferred and stored in the printer's memory, the template can be recalled and any data can be replaced, before printing with just a few short commands.

Compatibility may vary according to part number - refer to the table on the following page.



Mobile Deploy

Cloud-based app for mobile devices (iOS and Android™) allows IT administrators to remotely update and configure multiple Brother mobile printers. Using Mobile Deploy, the administrator can easily upload any new update packages to an online location and share the URLs with the users.

Printer Commands

With the support for ZPL II emulation and a variety of additional printer command languages, developers can easily integrate printing into existing legacy systems (refer to specification tables for further details).

Software Development Kits (SDK)

Brother can supply a selection of free of charge Software Development Kits (SDK) for easy integration of label printing directly into end-users software.

Available from: <https://www.brother.co.jp/eng/dev/index.aspx>





Software

Part Number	TD-4410D	TD-4420DN	TD-4520DN	TD-4550DNWB
P-touch Editor	✓	✓	✓	✓
Mobile Deploy App				✓
Brother Font Manager	✓	✓	✓	✓
Printer Settings Tool	✓	✓	✓	✓
Bartender Ultra Lite Edition				
Brother Printer Management Tool				
Crop Function (Windows Driver)			✓	✓

For further details, visit: <https://support.brother.com>

Specification

TD-4410D	TD-4420DN	TD-4520DN	TD-4550DNWB
4 inch			

Printing

Print technology	Direct thermal	
Print speed	203mm per second	152mm per second
Resolution	203dpi	300dpi
Maximum print width	104.1mm	108.4mm
Minimum print length	Continuous: 6.4mm, Peeler: 12.7mm, Cutter: 20mm, Tear: 27mm	
Maximum print length	3000mm	
Media sensor type	Gap (Transmissive), Bar (Reflective)	
Media sensor location	Gap (Fixed), Reflective (Adjustable)	
Tear off release mode	Standard: Continuous, Tear off, Optional: Peeler, Cutter	

Connectivity

USB	●	●	●	●
Serial	●	●	●	●
Wired LAN		●	●	●
USB Host Port				●
Bluetooth				●
Wireless LAN				●

General

Dimension (mm)	180mm (W) x 224mm (D) x 155mm (H)	
Weight	2.08kg	
Control panel	3 button, 3 LED	7 button 3 LED
LCD		●
Operating systems support	Windows 7 / 8 / 8.1 / 10 Linux	Windows 7 / 8 / 8.1 / 10, Windows Server 2008 / 2008R2 / 2012 / 2012R2 / 2016 Linux
Print commands	P-touch Template, ESC/P, Raster, ZPL II emulation, CPCL emulation	

Specification

TD-4410D	TD-4420DN	TD-4520DN	TD-4550DNWB
4 inch			

Printing

Print technology	Direct thermal		
Print speed	203mm per second	152mm per second	
Resolution	203dpi	300dpi	
Maximum print width	104.1mm	108.4mm	
Minimum print length	Continuous: 6.4mm, Peeler: 12.7mm, Cutter: 20mm, Tear: 27mm		
Maximum print length	3000mm		
Media sensor type	Gap (Transmissive), Bar (Reflective)		
Media sensor location	Gap (Fixed), Reflective (Adjustable)		
Tear off release mode	Standard: Continuous, Tear off, Optional: Peeler, Cutter		

Media

Media types	Wristbands, Continuous, Die cut, Fan fold, Perforated, Tag
Media thickness	0.058mm - 0.279mm (0.002 inch to 0.011 inch)
Media width	19mm - 118.11mm (0.75 inch to 4.65 inch)
Media length	6.4mm - 3000mm (0.25 inch to 118.11 inch)
Diameter (Max)	127mm (5 inch)
Core Diameter (Max)	12.7mm (0.5 inch)

Connectivity

USB	USB version 2.0 (full speed) Type B			
USB host capability				Yes
Serial	Serial RS232C (DB9 male)			
Wired LAN	10/100BASE-TX			
USB host port				Yes
Bluetooth				Version 4.2
Bluetooth profile				SPP, OPP, HCRP Bluetooth Classic, GATT (Bluetooth Low Energy)
Wireless LAN				802.11a/b/g/n
Wireless LAN security				Authentic method (encryption scheme) Infrastructure mode- Open system (None/ WEP64/WEP128) Common key authentication (WEP) WPA/WPA2- PSK (TKIP+AES), EAP-FAST (TKIP/AES), PEAP (TKIP/AES), EAP-TLS (TKIP/AES), EAP-TTLS (TKIP/AES) Authentic method (encryption scheme) Wireless direct mode WPA2-PSK (AES)
MFI support	No	No	No	Yes
AirPrint	No	No	No	Yes
Wired LAN	No	Yes	Yes	Yes

Specification

TD-4410D	TD-4420DN	TD-4520DN	TD-4560DNWB
4 Inch			

General

Control panel	3 button, 3 LED	7 button, 3 LED
LCD type		Mono

Power

AC Power adapter	AC Power adapter (100 - 240V, 50/60Hz)
------------------	--

Software

Operating systems support	Windows 7 / 8 / 8.1 / 10 Linux	Windows 7 / 8 / 8.1 / 10 Windows Server 2008 / 2008R2 / 2012 / 2012R2 / 2016 Linux
---------------------------	--------------------------------------	--

Print commands	P-touch Template, ESC/P, Raster, ZPL II emulation, CPCL emulation
----------------	---

Barcode symbologies	Linear: CODE 39, ITF(I-2/5), EAN-8(JAN8), EAN-13(JAN13), UPC-A, UPC-E, CODABAR (NW-7), CODE 128, GS1-128(UCC/EAN 128), GS1 Databar (Standard (Omnidirectional)/Truncated/Stacked/Stacked Omnidirectional/Limited/Expanded), CODE93, POSTNET, UPC/EAN EXTENSION, MSI, Intelligent Mail Barcode 2-dimensional: QR Code (model 1, model 2, micro QR), Maxicode, PDF417 (Standard, Truncate, MicroPDF417) Data Matrix (ECC200 Square, ECC200 Rectangular) Aztec
---------------------	---

Internal fonts	ESC/P, Bitmap font: LetterGothicBold (16,24,32,48dot), Helsinki (16,24,32,48dot), Brussels (24,32,48dot), Brougham (24,32,48dot), San Diego (24,32,48dot), Gothic (16,24,32dot) Outline font: LetterGothicRegular, Helsinki, Brussels, Gothic (1 – 400dots) <P-touch Template> Outline font: LetterGothicRegular, Helsinki, Brussels, Gothic (1 – 400dots) Downloadable font support* via Font Manager software
----------------	--

Memory

RAM	256MB
Flash	64MB

Environmental

Operating temperature	Operate: 5°C to 40°C
Operating humidity	20% - 85% (No condensation, Max wet bulb temperature: 27°C)
Storage temperature	-20°C to 60°C
Storage humidity	10% - 90% (No condensation)

Dimension & Weight

Dimension (mm)	180mm (W) x 155mm (D) x 224mm (H)
Weight	2.08kg

Package content

Box content	TD-4D Desktop Label printer AC Power adapter USB cable User guide
-------------	--

brother
at your side